



**Product Features**

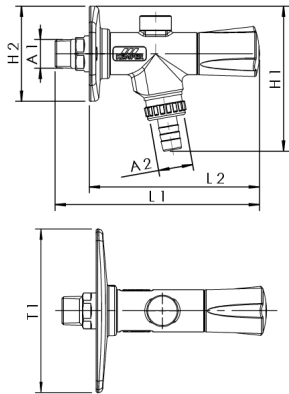
- pre-assembled
- wetted metal parts made of dezincification-free and corrosion-resistant gunmetal (in closed position), resistant against aggressive water
- suitable for quick and easy installation in the frost-free areas
- inner top part for quick opening operation (two turns)
- high discharge capacity of 40 l / min (1 bar)
- maintenance-free EPDM spindle seal
- EPDM-seat gasket
- cone with internal CV spring
- integrated CV and tube aerator as a security combination HD
- inlet male pipe thread
- matt chrome-plated operating handle with blue identification plate
- free from dead spots
- incl. hose coupling for common connection systems

**Standards and Approvals**

- DVGW approval
- SVGW approval
- plastic parts with KTW and W 270 approval
- according to accepted materials list from German environmental agency
- soundproofing certification according to DIN EN ISO 3822 Class 1

**Technical Data**

- pressure rating PN 16
- max. operating temperature 90 °C



| part no.   | DN | A1    | A2    | H1 (mm) | H2 (mm) | L1 (mm) | L2 (mm) | T1 (mm) | flow at 0.05 Mpa (l/s) | flow at 0.1 MPa (l/s) | flow at 0.15 Mpa (l/s) | kg    |
|------------|----|-------|-------|---------|---------|---------|---------|---------|------------------------|-----------------------|------------------------|-------|
| 5770901500 | 15 | R 1/2 | G 3/4 | 106     | 70      | 150     | 125     | 120     | 0,4                    | 0,67                  | 0,8                    | 0,751 |

**accessory**

- socket key operated for FROSTI®, figure 574 00 001
- operating handle for FROSTI®, lockable, figure 575 00 003
- operating handle for FROSTI®, lockable and with master key system, figure 575 02 003
- dismantling key for lockable operating handle, figure 575 01 003