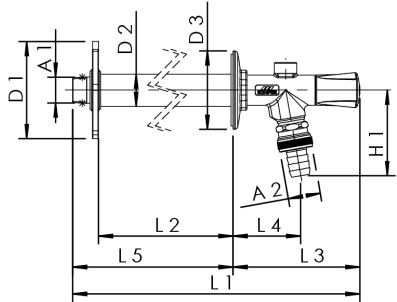


Product Features



- construction set version, suitable for the brick shell installation and for the subsequent installation in completed outer wall
- wetted metal parts made of dezincification-free and corrosion-resistant gunmetal (in closed position), resistant against aggressive water
- universal length for all common installation depths
- inner top part for quick opening operation (two turns)
- high discharge capacity of 40 l / min (1 bar)
- cone with internal CV spring
- EPDM-seat gasket
- can be extended with optional extension kit
- with aerator for automatic drainage
- integrated CV and tube aerator as a security combination HD
- inlet male pipe thread
- matt chrome-plated operating handle with blue identification plate
- free from dead spots
- incl. torsion protection sleeve
- incl. hose coupling for common connection systems

Standards and Approvals

- DVGW approval according to VP 648
- ÖVGW approval
- SVGW approval
- KIWA approval
- BELGAQUA approval
- VA approval
- plastic parts with KTW and W 270 approval
- according to accepted materials list from German environmental agency
- soundproofing certification according to DIN EN ISO 3822 Class 1
- EN 1717

Technical Data

- min. installation depth 150 mm
- max. installation depth 415 mm
- pressure rating PN 16
- max. operating temperature 90 °C

part no.	DN	A1	A2	D1 (mm)	D2 (mm)	D3 (mm)	H1 (mm)	L1 (mm)	L2 (mm)	L3 (mm)	L4 (mm)	L5 (mm)	flow at 0.05 Mpa (l/s)	flow at 0.1 MPa (l/s)	flow at 0.15 Mpa (l/s)
5740001500	15	R 1/2	G 3/4	100	33	80	71,5	570	415	130	67,5	440	0,4	0,67	0,8
5740002000	20	R 3/4	G 1	100	33	80	71,5	570	415	130	67,5	440	0,4	0,67	0,8

part no.	kg
5740001500	1,827
5740002000	1,928

accessory

- socket key operated for FROSTI®, figure 574 00 001
- operating handle for FROSTI®, lockable, figure 575 00 003
- operating handle for FROSTI®, lockable and with master key system, figure 575 02 003
- extension for FROSTI®-PLUS, figure 574 00 002
- fixing set for FROSTI®-PLUS, figure 574 00 005
- dismantling key for lockable operating handle, figure 575 01 003
- FROSTI® -sealing collar, figure 574 00 006