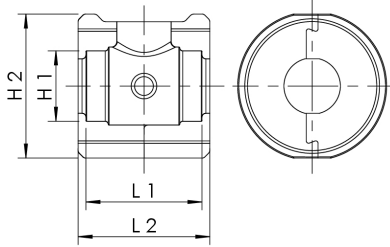




Product Features

- suitable for Fig. 351 00
- removable and re-usable insulation shell for ball valves with thread connections
- made of expanded polypropylene
- interlocking half-shells
- to meet the requirements of EnEV 2014
- building material class B2 according to DIN 4102
- max. operating temperature 110 °C



| part no. | DN | H1 (mm) | H2 (mm) | L1 (mm) | L2 (mm) | kg |
|------------|----|------------|------------|------------|------------|-------|
| 4712401500 | 15 | 32 | 67 | 70 | 80 | 0,014 |
| 4712402000 | 20 | 39 | 78 | 69 | 80 | 0,019 |
| 4712402500 | 25 | 45 | 92 | 74 | 84 | 0,028 |
| 4712403200 | 32 | 56 | 103 | 85 | 95 | 0,038 |
| 4712404000 | 40 | 64 | 119 | 95 | 107 | 0,053 |
| 4712405000 | 50 | 82 | 145 | 110 | 122 | 0,089 |