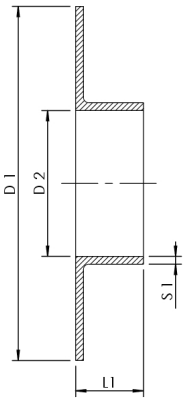


**Product Features**

- for use with backing ring
- made of copper
- according to accepted materials list from German environmental agency
- pressure rating PN 10
- max. operating temperature 200 °C



part no.	DN	A1 (mm)	D1 (mm)	D2 (mm)	L1 (mm)	S1 (mm)	kg
4250001500	15	15	45	15	9	1,5	0,028
4250001800	15	18	45	18	9	1,5	0,028
4250002000	20	22	58	22	10,5	1,5	0,048
4250002500	25	28	68	28	13	1,5	0,065
4250003200	32	35	78	35	15	1,5	0,086
4250004000	40	42	88	42	15	2	0,103
4250005000	50	54	102	54	17	2	0,163
4250007600	65	76	122	76	21	2	0,191
4250008900	80	89	138	89	23	2	0,23
4250010800	100	108	158	108	19	2,5	0,404
4250013300	125	133	188	133	22	3	0,615