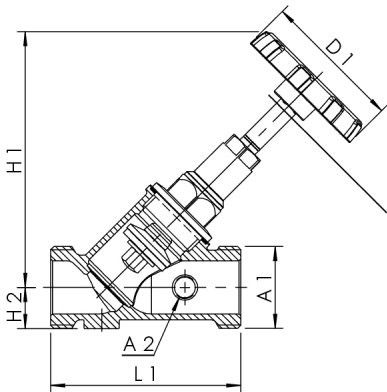




Product Features

- wetted parts made of stainless steel
- maintenance-free spindle sealing with self-lubricating and under pressure replaceable EPDM-lip gasket
- EPDM-seat gasket
- cone rotatable, protected against water hammer
- male union thread
- with sidewise drain valve, rotatable hose connection element G 3/4
- spindle thread not in contact with medium
- wear-resistant stainless steel valve seat
- with a black handwheel
- free from dead spots
- Open position indicator



Standards and Approvals

- DVGW approval
- ÖVGW approval
- SVGW approval
- WRAS approval
- KIWA approval
- VA approval
- plastic parts with KTW and W 270 approval
- according to accepted materials list from German environmental agency
- up to DN 32 soundproofing certification according to DIN EN ISO 3822 Class 1
- DIN EN 1213
- ÜA-Reg.-Nr. R-15.2.3-21-17049, WIEN-ZERT

Technical Data

- pressure rating PN 16
- max. operating temperature 110 °C

part no.	DN	A1	A2	D1 (mm)	H1 (mm)	H2 (mm)	L1 (mm)	Zeta	cv (m³/h)	kg
0731G01500	15	G 3/4	G 1/4	60	100	17,5	70	2,3	5,9	0,467
0731G02000	20	G 1	G 1/4	60	100	19	78,5	1,6	12,5	0,593
0731G02500	25	G 1 1/4	G 1/4	70	128	21	97	1,4	21,3	0,963
0731G03200	32	G 1 1/2	G 1/4	70	145	24	110	1,1	38,7	1,22
0731G04000	40	G 1 3/4	G 1/4	70	153	28	130	1,8	47,2	1,621
0731G05000	50	G 2 3/8	G 1/4	90	195	33	145	1,4	84,8	2,644

accessory

- SST sampling valve, figure 087 00
- insulation shell for inclined stop valves, figure 471 10
- gunmetal solder union connector, figure 476 04
- gunmetal union connector, union nut, FPT, figure 476 06
- gunmetal union connector, union nut, FPT, with drain valve, figure 476 07
- gunmetal union connector, union nut, MPT, figure 476 08
- solder / pressfit union connector, figure 476 14
- pressfit union connector, MAPRESS stainless steel and copper, figure 476 22
- pressfit union connector, SANPRESS and PROFIPRESS, figure 476 30
- pressfit union connector, SANHA and NiroSan, figure 476 35
- pressfit union connector, MEPLA, figure 476 40
- pressfit union connector, MAPRESS stainless steel, figure 476 20
- pressfit union connector, SANPRESS INOX, figure 476 70
- pressfit union connector for Viega RAXOFIX, figure 476 32