



Product Features

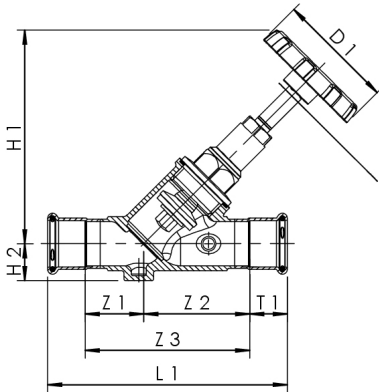
- wetted parts made of stainless steel
- maintenance-free spindle sealing with self-lubricating and under pressure replaceable EPDM-lip gasket
- EPDM-seat gasket
- cone rotatable, protected against water hammer
- press connection Geberit MAPRESS
- without drain port (drain valve cannot be added)
- spindle thread not in contact with medium
- wear-resistant stainless steel valve seat
- with a black handwheel
- free from dead spots
- Open position indicator

Standards and Approvals

- DVGW approval
- SVGW approval
- KIWA approval
- VA approval
- plastic parts with KTW and W 270 approval
- according to accepted materials list from German environmental agency
- up to DN 32 soundproofing certification according to DIN EN ISO 3822 Class 1
- DIN EN 1213
- ÜA-Reg.-Nr. R-15.2.3-21-17049, WIEN-ZERT

Technical Data

- pressure rating PN 16
- max. operating temperature 110 °C



part no.	DN	A1 (mm)	D1 (mm)	H1 (mm)	H2 (mm)	L1 (mm)	T1 (mm)	Zeta	cv (m³/h)	kg
0730001500	15	15	60	100	17,5	112	20	2,3	5,9	0,411
0730002000	20	22	60	100	19	125	21	1,6	12,5	0,521
0730002500	25	28	70	128	22,5	146	23	1,4	21,3	0,855
0730003200	32	35	70	145	24	167	26	1,1	38,7	1,185
0730004000	40	42	70	153	28	189	30	1,8	47,2	1,75
0730005000	50	54	90	195	33	222	35	1,4	84,8	2,809

accessory

insulation shell for inclined stop valves, figure 471 10